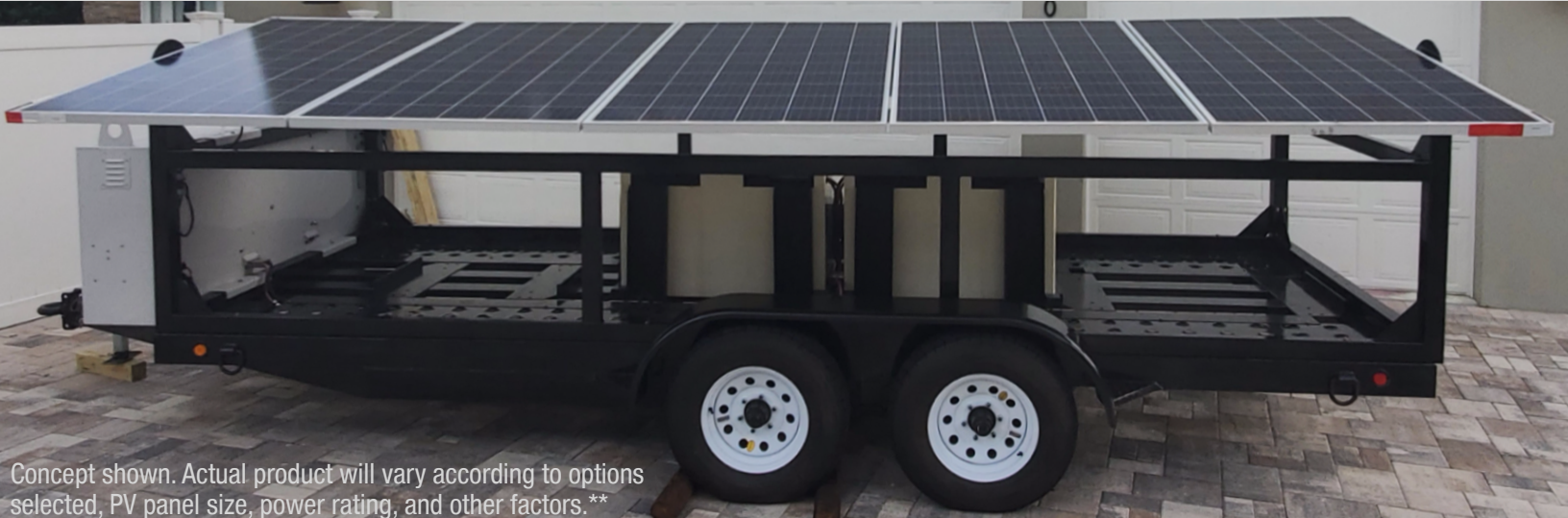




OneSunrise

Concept shown. Actual product will vary.\*\*

### MPower HC4 High Capacity Mobile PV Array North American Data Sheet v22.2



Concept shown. Actual product will vary according to options selected, PV panel size, power rating, and other factors.\*\*



## Standard Features\*

**Q Cell Q.PEAK DUO XL-G10 Photovoltaic (PV) Array** - Ultra high performance UL Certified solar panels, designed in Germany and built by Hanwha of Seoul, South Korea, one of the largest and most advanced manufacturers of PV panel arrays in the world (a Fortune 500 company).

- 12 panels rated @ 470 watts each, total of 5,600 watts per hour at peak production
- Zero gap cell layout for up to 21.6% efficiency and higher yield per surface
- Extreme weather rating certified for high snow and wind loads
- 12-year manufacturer product warranty with 25-year manufacturer performance warranty

**High Capacity 48V LiFePO4 Battery System** - Ultra high performance Lithium Iron Phosphate battery pack designed for near zero maintenance and modular expansion, using a computer-controlled battery management system (BMS) to optimize performance and longevity.

- 48 Volt 500 Amp-hour rating for all-day power on rainy days
- 24KWH (nominal) energy rating with 100 Amp (maximum) discharge current
- Cycle life up to 6,000 @ 25°C, based on 80% DOD (depth of discharge) per cycle
- 10-year manufacturer warranty

**SPF 12000T DVM-US Split-Phase Inverter with MPPT Solar Charger/Controller** - High efficiency 120v/240v power supply with pure copper low-frequency transformer and intelligent design, built by Growatt Energy Company, the #1 solar inverter manufacturer in the world.

- 12KW nominal 36KW surge inverter provides continuous 100 AMP @ 120VAC, 60Hz “clean” sine wave power
- On grid/off grid flexibility with auto generator start, suitable for home, office, farm and industrial use
- Robust architecture supports inductive loads (such as refrigerators, air conditioners, motors, pumps, compressors, and laser printers) as well as resistive loads (such as heaters and incandescent lights)
- 10-year manufacturer warranty

**T211 Mobile Power Platform with Rotating PV Array Mounting System** - Road-ready 10,000 lb. GVW trailer with an IP-67 environmentally-rated watertight, temperature-controlled electronics enclosure and innovative multi-angle (rotating) solar panel mounting and aiming system, custom-built in the USA for One Sunrise.

- (2) 5000 Lb. easy-lube axles with 15” wheels, wrapped tongue and 7-pin round wiring harness
- Bed size approx. 7x22’ with side rails and open construction
- Standard weight of approx. 4,200 lbs. allows the trailer to haul additional payloads of up to 5,800 lbs.
- Ball hitch with top wind jack and coupler, electric brakes, breakaway kit, full fenders and LED lighting
- Wired for 120v 100 AMP service, including sub panel with breakers and NEMA rated power outlets
- Warranty varies with certain build options, ask for details

## Available Options\*

- Extreme weather package
- 240v sub panel with NEMA rated power outlets
- Additional battery modules to store up to 50KW total
- Additional portable solar panels up to 10KW/hour total
- 11KW Kubota Lowboy II diesel generator with auto start
- Onboard high capacity supplemental diesel fuel tank
- Upgraded trailer construction & axles for up to 14K GVW
- Diamond-plate flooring and/or sides
- ODM, OEM and custom-designed features available

\*Specifications subject to change without notice.

\*\*Concept trailers shown including certain available options.

